



MONTHLY MEMBERSHIP PROGRESS REPORT

District 9 SE

Results as of: 04/30/2018

GMT: MICHAEL MOLENDIA

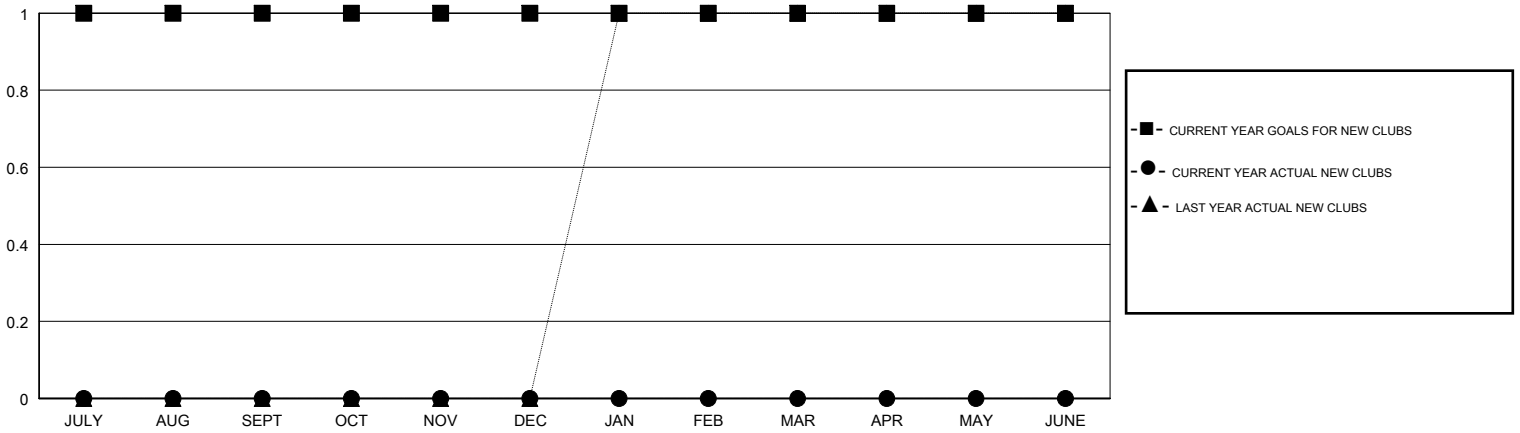
LOCATION IOWA

GMT CA

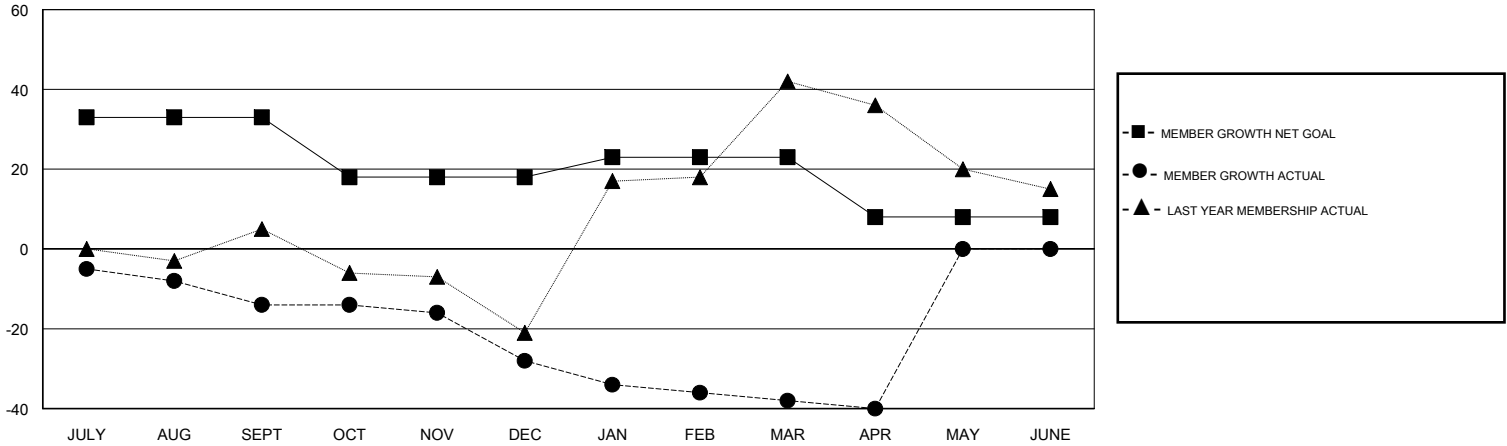
Clubs			
RESULTS FOR 2017-2018			
QUARTER	NEW CLUB GOAL	NEW CLUBS	DROPPED CLUBS
JULY/AUG/SEPT	1	0	0
OCT/NOV/DEC	0	0	1
JAN/FEB/MAR	0	0	0
APR/MAY/JUNE	0	0	0

Members			
RESULTS FOR 2017-2018			
QUARTER	MEMBER GROWTH NET GOAL	MEMBER GROWTH ACTUAL	DROPPED MEMBERS ACTUAL (including transfers)
JULY/AUG/SEPT	33	23	35
OCT/NOV/DEC	-15	16	29
JAN/FEB/MAR	5	17	27
APR/MAY/JUNE	-15	3	4

GOALS AND ACTUAL NEW CLUBS CUMULATIVE



GOALS AND ACTUAL MEMBERS CUMULATIVE



DROPPED CLUBS: 1	26 CLUBS OF 49 ADDED 1 OR MORE NEW MEMBERS	<u>GENDER DISTRIBUTION</u> MALE 802 (70.54%) FEMALE 335 (29.46%) Women Percentage Fiscal Year Goal: 29%
<u>DROPPED MEMBERS</u> DECEASED 16 CLUB CANCELLED 5 OTHER 74 TOTAL 95	CLICK HERE FOR CUMULATIVE MEMBERSHIP DATA	TOTAL FAMILY UNIT MEMBERS 232 FAMILY MEMBERS PAYING HALF DUES 116